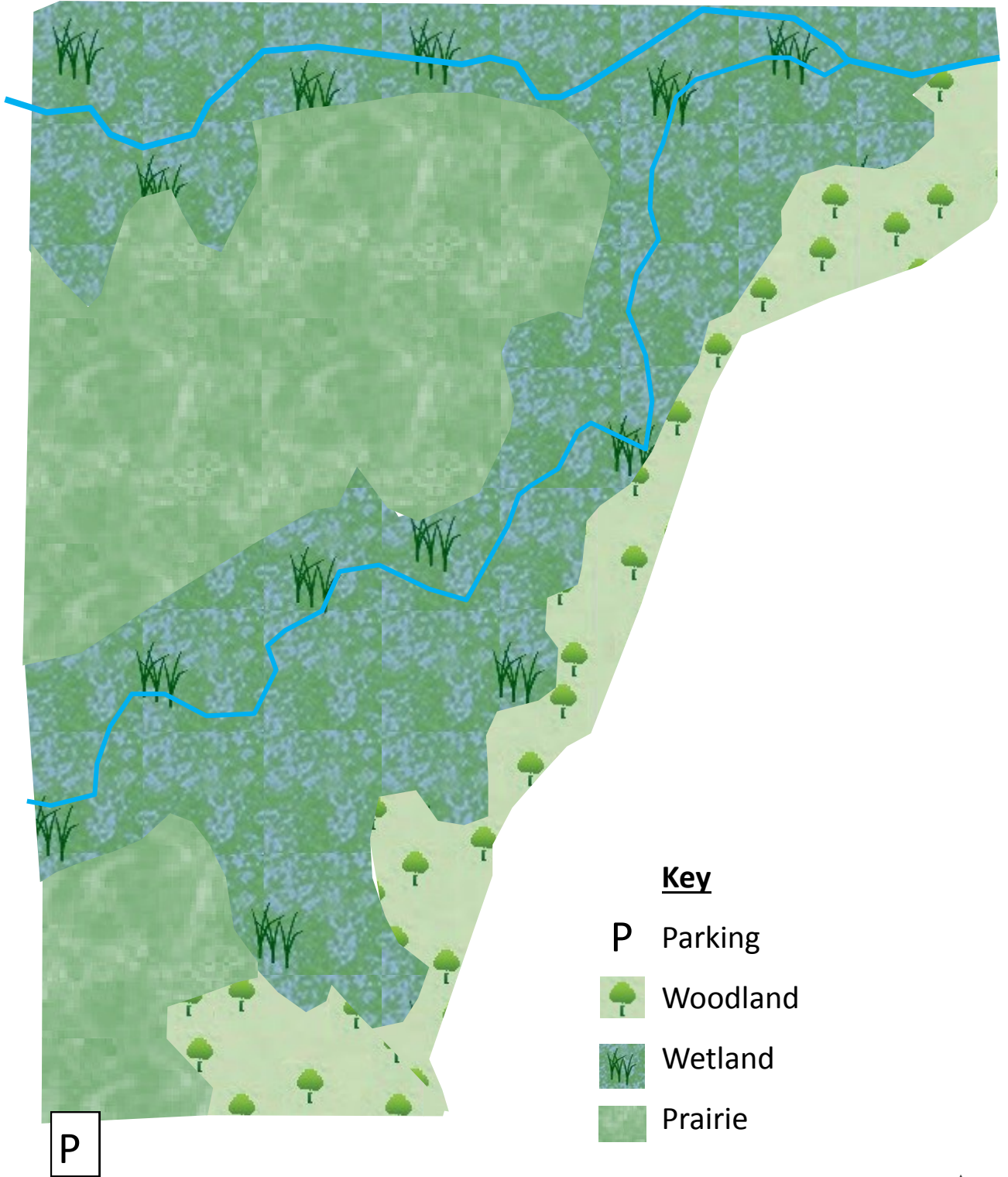
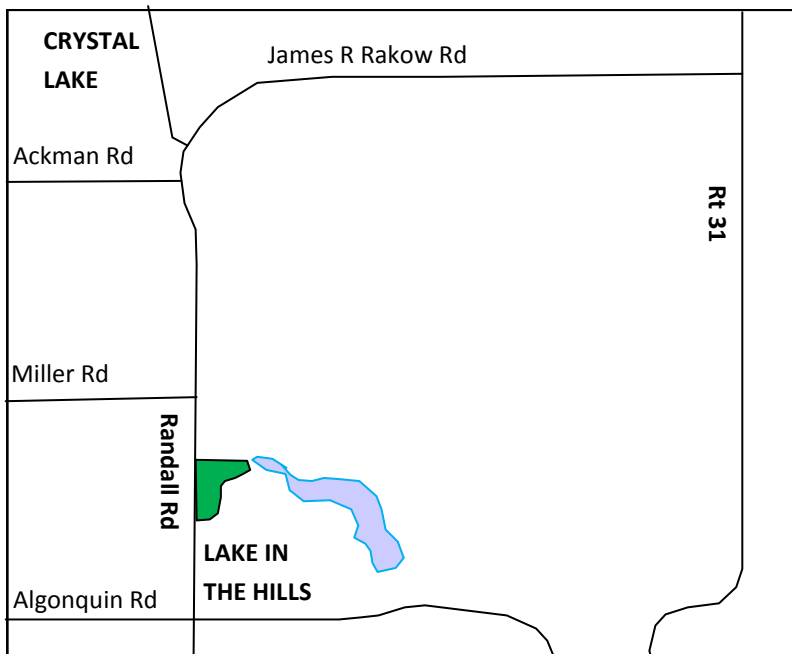


# Acorn Lane 13 Acres

Randall Rd



## SITE LOCATION



## GENERAL RULES

**Site hours are sunrise to sunset.**

**No alcohol.**

**Pets must be leashed at all times.**

**No camping.**

**No fires.**

**No removal or disturbance of any plant or animal life.**

## INFO AND HISTORY ABOUT SITE

Travelers in McHenry County may have noticed a sign announcing “This land preserved forever” along Randall Rd., just north of the Ace Hardware in LITH. The 13 acre property was donated to TLC in 2007, and includes a portion of Woods Creek, a wetland area, and an upland buffer that will remain open and undeveloped forever. Woods Creek starts in Algonquin, flows along a walking/bicycle trail, threads through several subdivisions, and passes under Randall Rd. into LITH on its way to the Village’s namesake lake. Over the past few years, restoration efforts have focused on controlling invasive brush, sandbar willow, and other non-native plants that tend to dominate sites where they become established. We’ve also conducted prescribed burns and sowed native prairie and wetland seed.

There are no trails and no amenities currently at this site, but feel free to wander. Park in the shopping complex on the corner of Randall Rd and Acorn Lane, where the Ace Hardware is located.



[www.ConserveMC.org](http://www.ConserveMC.org)