

Boloria Meadows

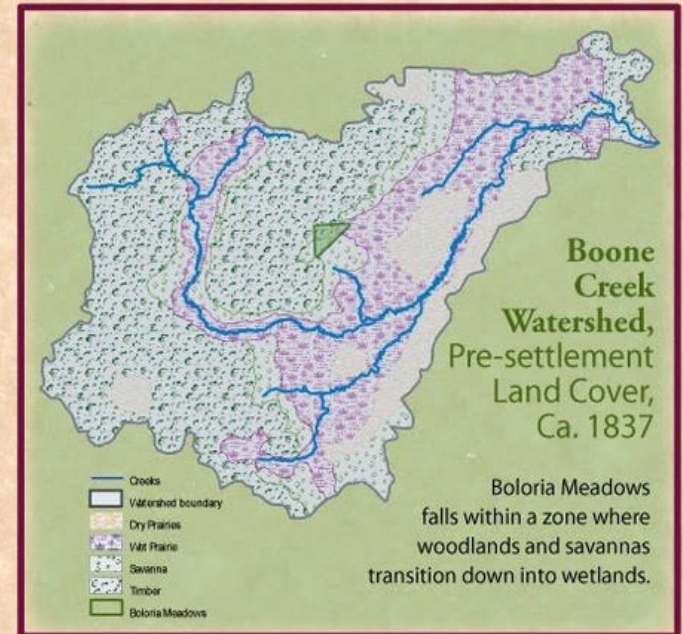
A Living Relic

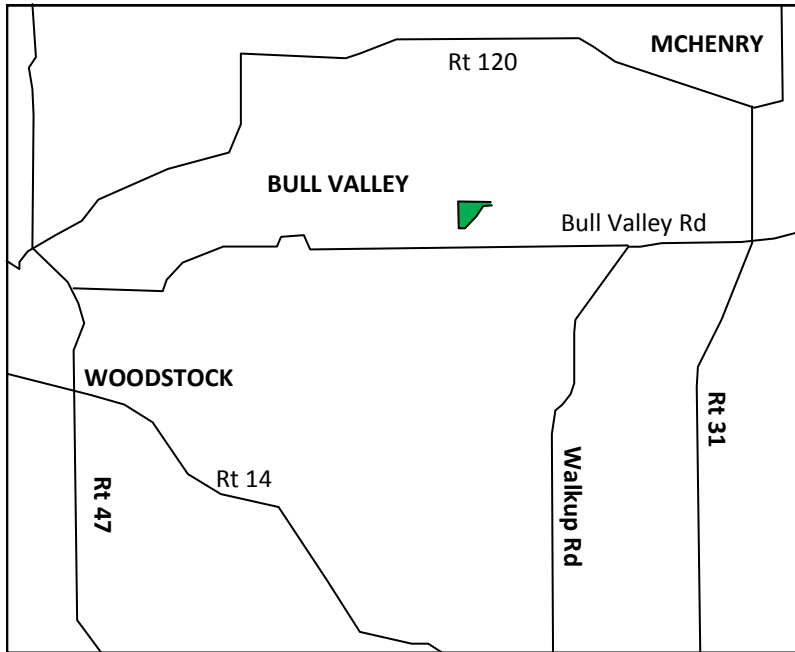
In the summer of 1837, surveyors from the US General Land Office came to the area to layout the township lines of the Boone Creek watershed. The surveyors records indicate that the Boone Creek landscape was generally "open" consisting of wetlands, prairies, savannas and woodlands. In 1837, just as today, the most outstanding feature of the area was the impressive valley of Boone Creek nestled within abruptly rising glacial moraines.

Boloria Meadows

located within the Boone Creek Watershed, is home to several types of natural communities which were once wide spread.

- ~The high quality fen and sedge meadow are the most outstanding natural features of Boloria Meadows.
- ~The fen, sedge meadow and wet prairie are watered by mineral rich water, filtered and enriched as it passes through the gravel in the surrounding moraine hills.
- ~The oak, hickory woodland and oak savanna are home to numerous old, large pre-settlement oak and hickory trees.





GENERAL RULES

Site hours are sunrise to sunset.

No alcohol.

Pets must be leashed at all times.

No camping.

No fires.

No removal or disturbance of any plant or animal life.

DIRECTIONS

From Bull Valley Road, about 3.5 miles west of McHenry, or 5.5 miles east of Woodstock, enter the McAndrews Glen subdivision on McAndrews Glen Dr. Take the second left onto Millburne Ct, and park on the side of the road where the trail begins.

