

2023 Gratitude Report



Lisa Haderlein

Over the years, I've often thought of TLC as an organization that celebrates, supports and elevates the conservation stories that might otherwise get lost in McHenry County. Most of those stories are about people who care, and who invest their time and energy in doing what they can to make McHenry County a healthier place for all living things.

TLC's programs are designed to support and empower those in the community who want to take action – at work, at home, and in their communities – to preserve, restore and take care of the land they love. Conservation@Home and @Work. Conservation Easements. Women's Learning Circles. Apple Creek Food Forest. Project Quercus/5000 Acres. Volunteer Land Restoration Events. Some of those stories from 2023 are in this Annual Report. I hope you enjoy them.

The other area that I believe distinguishes TLC is its willingness to create solutions for challenges that others may walk away from.

- ◆ In 2023, that was demonstrated by beaver dams in Woodstock and Johnsburg! Rather than accepting the standard response to flooding from beaver dams, which is to trap and kill the beaver and remove the dams, TLC found a company to install devices in the dams to reduce flooding to manageable levels.
- ◆ Queen Anne Cemetery Prairie is another example – this orphaned acre of original Illinois prairie was slowly degrading. No individual owned it, and no government entity wanted to claim it. At the request of descendants of some of the people buried there, TLC found a way to obtain title to the property, and has started restoration.

TLC also creates programs to address conservation challenges that come to its attention.

- ◆ Upon learning that 85% of the oaks in the county are on private property, TLC created Project Quercus to help engage and inspire people to care about their oaks. 5000 Acres was added in 2020 to inspire people to report the ways they are taking care of their oaks. Over 100 people have registered their oak acres!
- ◆ TLC's Most Vulnerable Natural Areas program which reaches out to owners of remnant habitat in the county has preserved over 1,000 acres at 39 remnant natural areas – mostly through donated conservation easements – in the past 20 years.
- ◆ The Conservation Leader Internship Program was started to provide a space for underserved students to develop the skills, networks and confidence to succeed in careers in the conservation field. This is TLC's way of investing in creating future conservationists who will carry this work forward through future generations.

Thank you for making all this work possible through your support and participation in the work of caring for the land and all the life it sustains. Together, we are making a difference that you can see, taste and breathe!

Together in Conservation, *Lisa*



Volunteers celebrated New Year's Eve by rescuing oaks at Thompson Road Preserve in Bull Valley.



Classes like Winter Tree Identification offer opportunities for people to learn more about our local landscape.



Members enjoyed a hike at Hennen at TLC's Wine and Cheese Hike.



Carol Elkins received the Conservation@Home Impact Award at the 2023 Annual Celebration



2023 marked the 15th year of Art of the Land, one of TLC's biggest fundraisers



Families enjoyed the outdoors at the 'Howl at the Wolf Oak' at Wolf Oak Woods.



Thank you to our wonderful volunteers, who were recognized at a Volunteer Appreciation event.



CLIP interns helped plant and care for a pollinator garden with the Youth and Family Center of McHenry County.



Seed Sharing Day is an opportunity for people to collect and share native seed for their prairie, savanna and wet habitats.



TLC staff and volunteers teamed up for a workday at Lynda Clayton Preserve with a staff group from Aon.

A quick, easy tip to make your home more Earth friendly

Plastic is unbelievably convenient. Who can live without plastic zip sandwich bags? Unfortunately, they're also an environmental nightmare. Even if you think you're recycling, only between two and nine percent of plastics actually get recycled.

One way to avoid adding plastic to our landfills, oceans and waterways is to be mindful of using less of it. Look for alternatives. An easy alternative to plastic sandwich bags are silicone Ziploc bags. They are easy to wash and reuse. They're much sturdier than the disposable plastic ones, too. They also sell little racks to dry the bags on, and those are worth the investment, too.



You can buy them at any local superstore and, of course, Amazon. But, remember when you buy from Amazon you're adding packaging to dispose of. While the initial cost is a bit higher than disposable plastic, it's not outrageous at all and you save a lot more money in the long run because they can be used indefinitely.

—Karen Lavin, TLC Board Member
lawdog57@hotmail.com

The Land Conservancy of McHenry County

P.O. Box 352, Woodstock, IL 60098
815-337-9502

ConserveMC.org

Board of Directors

Karen Lavin, *President*
Randy Schietzelt, *Vice President*
Mark Newton, *Treasurer*
Shawn Kingzette, *Secretary*

Ders Anderson • Melissa Cooney • David Hall
Rob McCormack • Christine Nye • Kathy Reiland
Sandra Scheinfeld • Kurt Taylor • Steve Wenzel
Terry Willcockson

Full Time Staff

David Ducci
Kim Elsenbroek
Lisa Haderlein
Jennifer Luniewicz-Martins
Glenda Maki
Megan Oropeza
Caroline Smith

Part Time Staff

Linda Balek
Claire Hodge
Gretchen Madsen
Sarah Michehl
Trish Woselowsky
Dave Zeiger

Welcome New Members!

Sarah Graybill | Crystal Lake
Christine Howard-Swan | Woodstock
Judy Howe | Dahlonoga, GA

Susan Lacerra | Walworth, WI
Jeremy LaMarche | Park Ridge
Lisa Migon | Spring Grove

Patti Klein | Woodstock
Jamie Sterritt | Marengo
Charles Stuck | North Aurora



Restoration Volunteers Wanted!

- ✓ Do you love being outside and hanging out with friendly people?
- ✓ Do you need summer service hours?
- ✓ Become a restoration volunteer with TLC!

We have sites throughout the county, so there is likely a site near your home that needs your help!

Workdays are usually in the mornings and last for three hours, with a snack break halfway through. Feel free to stay the whole time, or leave when you need to.

At workdays we cut and burn invasive species so the native trees and plants can flourish. Experienced sawyers are also needed. Interested? Fill out the volunteer form at ConserveMC.org/Volunteer and you will receive email updates about upcoming workdays. Thank you!

Plant Native!

TLC's Fall Sustainability Sale
July 18-Aug. 14



Order your native plants, trees and shrubs for fall planting.

Pre-order your native plants, trees, and shrubs for local pickup in September. Help our local environment while also helping TLC. Don't wait to place your pre-order, we expect demand to be high!

Plant pick-up Date: Friday, Sept. 13 and Saturday, Sept. 14
Location: McHenry County Fairgrounds,
11900 Country Club Rd, Woodstock, IL

Hands-on In the Field—TLC's Conservation Leader Internship Program



TLC's 2023 crew of interns.

In 2023, TLC's Conservation Leader Internship Program (CLIP) delivered hands-on conservation programming to high school and college students who represent groups that are traditionally underserved in the field.

Students began the summer with little to no experience or knowledge about the field of conservation, but left the program with the ability to be a leader. Some participants even said they would pay it forward to others interested in conservation by sharing their experience and knowledge.

The interns said they left the program feeling confident and knowledgeable. Each participant reported a positive experience, and several students said they wished the program was longer, or said it was the best summer of their life.

Even if some of the CLIPterns decide the field of conservation is not for them, elements of the experience will continue to serve them in any career. Grouping high school and college students works to the advantage of the CLIP program and gives college students the opportunity to mentor, and allows high schoolers to learn from the older students.

CLIPterns enjoy working with diverse age groups, from elementary-aged youth to TLC's retired volunteers. They also feel a sense of community and joy from finding so many people with a similar interest in nature. It's great to see the bond that develops among the students over the course of the program. A bond like that can't be forced, but is fostered through a unique set of experiences that will last a lifetime.

Did you know?

Over the 11 weeks of the internship, the interns accomplished as much invasive species control (weeds!) as a full-time employee would in three months. For certain problem plants like wild parsnip, having a crew of four to five people working together for several hours is an extremely effective way to take care of a problem.

What is forever?

When talking about the land that is entrusted to TLC, forever is as long as there are still humans and some system of government that defines the ownership of land. From a practical standpoint, we need to be prepared for preserving and taking care of the land for many generations. That's one of the reasons TLC runs CLIP each summer – it is a way for the organization to invest in building the next generation of people who will care about the land for the next 50 years. If every group like TLC had a similar internship program each summer, just imagine how many thousands of young people there would be prepared for conservation leadership in the decades ahead!

Conservation@Work Spotlight

– Wade Merritt –

Saving pollinators became my focus after hearing Christopher Stein, the founder of Operation Pollination, speak at the Lake in the Hills Rotary Club in 2020.

I did research on the drastic decline in pollinators and the causes of the decline. One thing struck me—I grew up on a farm in Kane County. We spent days spraying the milkweed that lined the fields to keep it from spreading. Little did I know the effect it would have on the environment. I wanted to do what I could to right this wrong, so decided to plant as many milkweed (and other native plants) as possible.

With the help of the club, we were able to get our first land donation from VCP Printing in Algonquin, next to the bike path where it would be visible to many. It was a small plot, only an 11-foot circle, but even small plots can make a difference.

I found out that TLC would assess the area and recommend the best plants for the site. Sarah Michehl gave us a great list of plants through TLC's Conservation@Work program. Soon we had many flowers that brought pollinators.

I also began my at-home pollinator journey. Previously, I thought you needed a pristine lawn that required fertilizer, pesticides and weed killers.

Wade Merritt helps install a pollinator garden at the Algonquin Library.



I called on Sarah again to give a consultation through TLC's Conservation@Home program.

My home has a large natural area with oaks, hickories, elms and maples. But I also had honeysuckle, garlic mustard and a burning bush that I didn't know were invasive. Sarah gave me a list of native plants, and I started changing everything I had been doing. I added milkweed

and butterfly weed for the monarchs and other natives to help the pollinators.

I converted old flower beds to pollinator gardens and removed grass and replaced it with native plants. Now my yard is full of many types of pollinators, including dozens of hummingbirds and monarchs in the summer. The remaining grass is now unfertilized, with no pesticides or weed killers.

With the help of Sarah and TLC's Conservation@Work program, I have now planned and planted three more public gardens. One in Sunset Park in Lake in the Hills, another at a retirement village, and the most recent at the Algonquin Public Library.

Because I wanted to learn more about the monarchs, I took two trips to their sanctuaries. One was Piedra Herrada in El Pedregal, Mexico and one at Pismo Beach, California. I learned that the monarchs are arriving much later in Mexico than in the past. Mexico celebrates the Day of the Dead on Nov. 1, and part of the celebration is the return of the monarchs, which they believe are the souls of those who have passed during the last year. Now the monarchs don't return until mid-November. One of the reasons could be that industrialization has moved the path of the monarch and added an additional 10-15 miles to their flight. While in Mexico I helped with the reforestation of property near the sanctuary. We planted 400 new trees in an attempt to help the monarchs in their journey.

My passion to help the pollinators keeps growing, and I am committed to make a difference in our environment. 🌱

Learning Circle Program Grows in 2022-2023

TLC began hosting Women Caring for the Land Learning Circles in partnership with American Farmland Trust in 2014. Eventually the grant partnership ended, but we decided it was important to continue this important programming. After holding Learning Circles annually for years, with increasing interest and participation, TLC began hosting three or four Women's Learning Circles seasonally, starting in 2022. This expansion was made possible by hiring part-time Farm Program Coordinator, Claire Hodge, with increased funding through a Food:Land:Opportunity grant. In 2022-23, the program also received additional support from a USDA grant in partnership with Savanna Institute, with the goal of improving water quality in the Gulf of Mexico by changing the farming landscape to include more agroforestry and conservation practices.

The Learning Circles provide a crucial link between women farmland owners and the resources and support networks they need to achieve their conservation goals. While this program was initially designed for non-operating landowners, our group in McHenry County has welcomed a rise in landowners who are actively managing or operating their lands, as well as farm managers, and even aspiring landowners. As such, our learning topics, conversations and farm visits vary widely to include: silvopasture and rotational grazing, fruit crop production, creative land access and land use agreements, agricultural education, agroforestry, and community building through agriculture. Participants are learning new ways to steward their land and also that they're not alone in doing so.

Through these events, we're also recruiting stewardship ambassadors through a program with the Women Food Agriculture Network in an effort



The Women's Learning Circle at Wonderland Community Project in Wonder Lake, IL.

to further uplift women as contributors and change makers in their communities. Other local partnerships in programming have included: MCC's Center for Agrarian Learning, McHenry County Conservation District, SWCD and NRCS, and Liberty Prairie Foundation/ IL FarmLink.

As TLC works to preserve farmland in McHenry County, we know we also must support the farmers.

Through our evolving Learning Circles for Women Farmers and Farmland Owners, we learn more each time about our community's needs and dreams. Offering resources, technical assistance, a network, and often 'a hand', we strive to grow with our community in their land stewardship goals.



Learning Circle participants on a wagon tour of Wanda Farm in Hebron, IL.

Growing Partnerships

Not just trees and shrubs are growing out at the food forest these days! As progress continues on the landscape, we also are building strong relationships within the community.

Given its proximity to the food forest, Woodstock's Creekside Middle School is a natural connection. Earlier this spring the school's garden club was able to use clippings from existing shrubs to propagate elderberry bushes for the windbreak that will be planted this fall. We are also looking forward to seed collecting and other opportunities in the fall. Giving the students these experiences in nature and the ability to get their hands in the soil gives them better footing to become the next generation of landowners and stewards.



This spring we also had our first public event at the food forest where volunteers prepared and seeded over 850 square feet of vegetable and herb gardens. The harvests from these gardens will be given to the Woodstock Food Pantry to ensure healthy, fresh produce is available to families this summer and fall. If you are interested in helping maintain and harvest the gardens or other food forest volunteering opportunities, please reach out to Gretchen Madsen at gmadson@conservemc.org.

TLC's CLIP Program is Underway!

TLC's Conservation Leader Internship Program is off and running for the summer of 2024! The participants get hands-on professional training in the field of conservation. Each week one of the interns writes about their experiences in the program, and you can read about what they are learning on TLC's blog. Check it out today!

ConserveMC.org/tlc-blog



Forty Acres of a Former Boy Scout Camp Preserved for Life in Woodstock

In 1993, Hugh and Marlene Frisbie purchased farmland outside of Woodstock where they built their home, raised their children, opened a plant nursery and began restoring the farm fields to native prairie, wetland and woodland habitat.

In 2011, they preserved 56 acres of their 61-acre property with a permanent conservation easement they donated to TLC.

In 2021, they acquired an adjacent 40 acres which was part of the Lakota Boy Scout Camp, and quickly got to work clearing buckthorn and honeysuckle from the woods. In 2023, they placed a permanent conservation easement on those 40 acres, ensuring they will be preserved as wetland and oak woodland – that makes 96 acres preserved forever.

An aerial view of the property, facing southwest, which shows its varied landscape.



The Frisbies' son Brandon, grandson Will, and dog Rosie enjoy some sledding fun.

Marlene says, "We had been familiar with the property, as we had hiked and skied it (with permission) when the Boy Scouts owned it. We had some concern about the future of the property once it was sold, so we got together a group of conservation-minded organizations to help ensure that the entire property could be preserved."

The property includes oak groves dominated by white oaks, with occasional red oaks, shagbark hickory and a stand of chestnuts. Wetlands throughout the property include vernal pools that offer seasonal homes for amphibians and reptiles. Also, the state-endangered Blanding's Turtle has been spotted in areas of the newly preserved land, as well as three different state-threatened or endangered bird species that visit the property's oaks and wetlands.

Their conservation land is located in an area of the county rich in natural resources and lands protected by public and private landowners, totaling 2,310 acres, which can be seen on the map on this page. Stay tuned – we are looking forward to having more chapters of Hugh and Marlene's land conservation journey to tell!



The map shows the property's proximity to other local conservation areas, allowing for connectivity of habitat.

Project Quercus inspires families to plant oaks in McHenry County

Project Quercus reaches out to schools, communities and organized groups to participate in preserving and restoring our oak hickory woodlands.

In May 2023, students and families from Landmark School in McHenry planted trees at Moraine Hills State Park. Landmark families have been planting trees with TLC since the spring of 2016. The school has planted oaks at other McHenry County sites with eight plantings altogether, totaling around 90 trees added to our local landscape!

Students and families from Landmark School in McHenry planted oaks at Moraine Hills State Park. Quercus: (Latin) oak or oak tree.





Art of the Land

16th Annual
art show
and
benefit!

Juried art show and benefit

Sept. 27 & 28, 6:30-10:00 pm

The Starline Factory

300 W. Front St., Harvard, IL

Call for Artists and Artisans!

Since 2009, the *Art of the Land* art show and benefit is the premier event for regional artists who draw their inspiration from the local landscape. Artists and artisans welcome! Check out our Youth Art category as well!

Art jury fee: \$25 for five pieces of art • Youth art jury fee: \$10 for three pieces of art • Artisans: No jury fee

Application Deadline: Sunday, August 18

Art Prizes

First Prize: \$250

2 Honorable Mentions: \$100 each

Guidelines and application are available at:



ArtoftheLand.org

TLC is a 501c3 organization



Learn more!

Show Your Support for Art and Nature in McHenry County Become a Sponsor!

Art of the Land would not be possible without the support of our generous sponsors!

Nearly 100 artists, artisans and photographers take part in *Art of the Land*, and over 500 people attend the two-day event. Proceeds from the event benefit land preservation in McHenry County.

Sponsorships start at \$250. Go to www.artoftheland.org/#sponsor or use the QR code to learn more.



2023 Financial Summary

There are stories in these numbers.

Growth in the Long-term Management and Easement Defense Funds is good news for TLC's sustainability, as they generate annual income to support easement monitoring and stewardship of the lands TLC owns.

Financial Assets	2023	2022
Long-term (Land) Management:	\$ 408,340	\$ 396,454
Easement Defense:	\$ 529,061	\$ 521,154
Oak Conservation Fund:	\$ 16,976	\$ 16,976
Operating Reserve:	\$ 100,000	\$ 57,283
Stewardship:	\$ 38,000	\$ 59,575
TOTAL	\$1,092,377	\$1,051,442

It's great to see the Operating Reserve up to \$100K again. These funds provide stability throughout the year, and are available to cover any shortages at the end of the year. Ideally, the reserve should be at least 3 months of operating expenses, or about \$135K.

Community Foundation*	\$ 255,320	\$ 232,209
-----------------------	------------	------------

*Funds at the Community Foundation for McHenry County are held by them to support management of the lands TLC owns. TLC is able to withdraw approximately 4% annually.

Property and Equipment Assets

Land Assets	\$5,806,854
Buildings/Equipment	\$ 368,403
TOTAL:	\$6,175,257

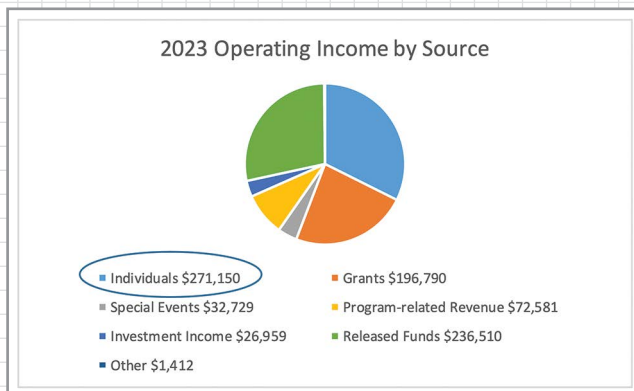
Debt

	2023	2022
Notes Payable*	\$ 93,611	\$ 229,681

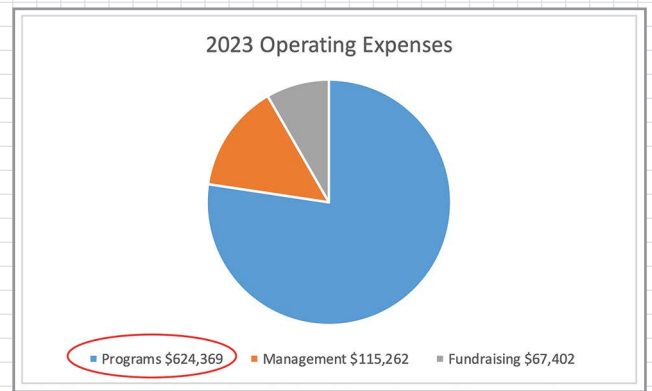
*TLC has two mortgages – one for Crowley Oaks with a balance of about \$10,000 that will be paid off in 2024, and one for the Thompson Road Preserve with a balance of \$83,000 that will be paid off within two years. What makes this such a great story is that in March 2022, TLC borrowed \$1.265 million to help purchase Thompson Road Preserve, and now there is just \$83,000 left to pay off!

For many folks, the financial part of an annual report is just a bunch of numbers, but there are many stories to be found in the charts, digits, dollar signs and commas.

Income from TLC members for operations surpassed \$250,000 for the first time ever. Those unrestricted donations make everything happen at TLC! The increase speaks to the generosity of TLC's members and also to the steady increase in the number of members. Thank you all so much!



Nearly 80% of operating income goes to programs, including Conservation@Home, land restoration and stewardship, volunteer engagement; Women's Learning Circles, farmland preservation; the CLIP internship program, oak conservation; and the Apple Creek Food Forest



Volunteer Hours

Volunteers are part of TLC's success, with 134 people donating a total of 3,874 hours in 2023! That's equivalent to nearly 2 full-time employees!

AT LEAST 25 HOURS

Anthony Bialek	42	Ron Jones	27
Tom Cubr	43	Brad Koschak	67
Carol Elkins	91	Cheri Magrini	27.25
Mike Evans	25.5	Jim Mroczenski	68
Susan Glines	54	Ken Pieper	28.5
Linda Gurgone	60	Jim Runchey	93
Donna Hrljac	52.75	Ken Williams	58.75

OVER 100 HOURS

Bernd Alden	161.5	Ted Thornton	269.5
Dennis Dreher	500	Kay Wych	137
Larry Fetzer	356.5	Brad Wych	174.5
Carol Giammattei	145	Tom Ziomek	144.45
Bruce Kessler	268		
Bruce Killips	179.25		
Margee Pieper	204		

Schools/groups that planted trees through Project Quercus:

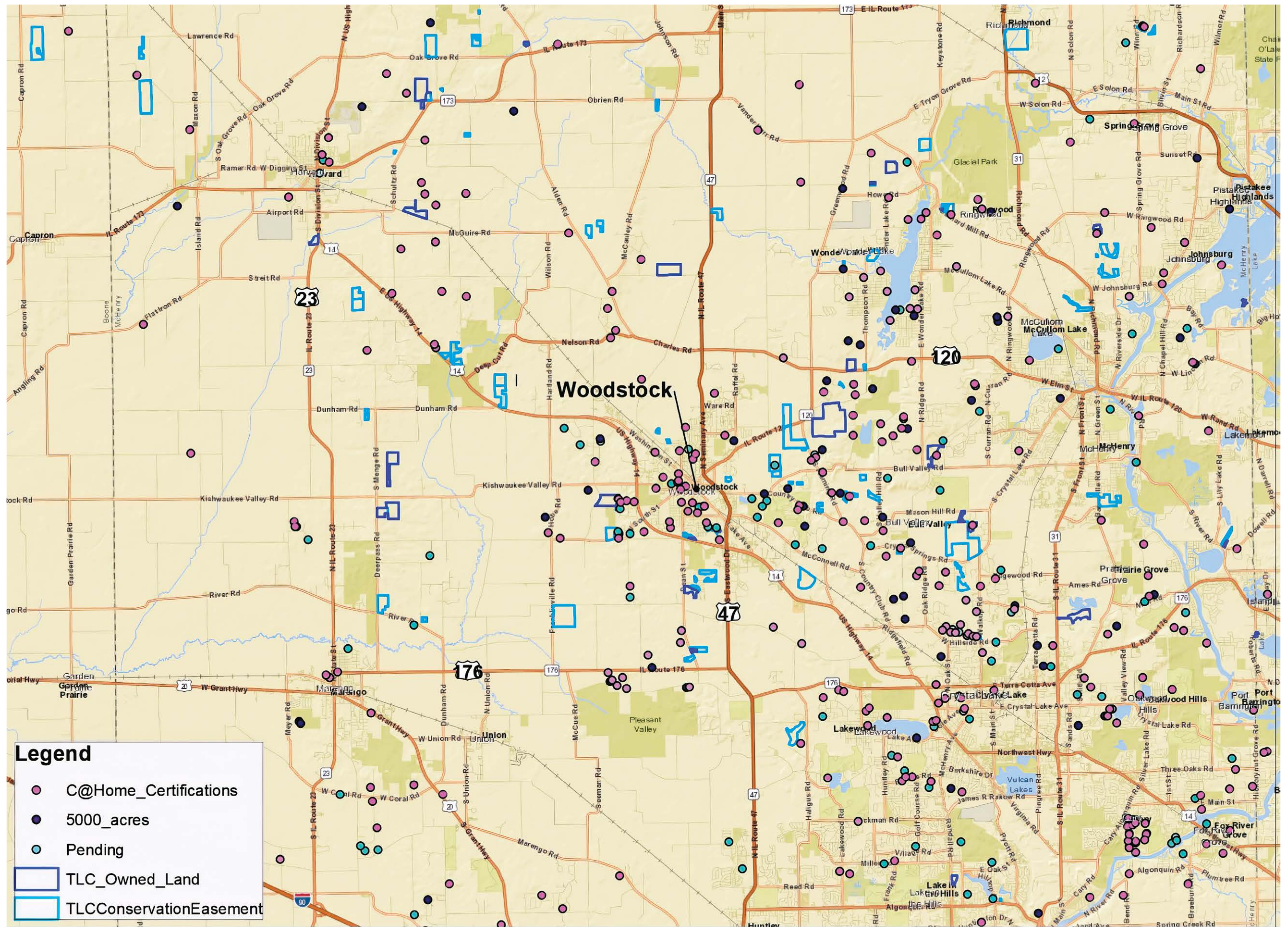
Landmark School, McHenry (36 hours)



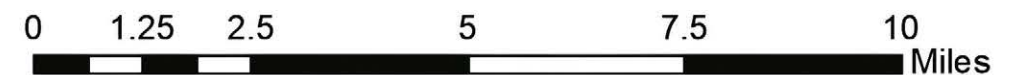
Conservation Impact

This map shows how TLC's conservation programs create natural connections throughout McHenry County. All because lots of people care, and choose to do what they can to take care of this place we call home.

Conservation easements donated by individuals. Habitat created and restored by residents through *Conservation@Home, @Work*, and *5000 Acres*. Preserves that TLC was able to acquire through your generosity, and that we manage with the help of scores of volunteers who donate thousands of hours each year. It all adds up!



TLC Protected & Conserved Land





The Wingate Circle includes those members who donated \$1,000 or more.

- Al Kennedy
- Ann Haderlein
- Barbara Oughton
- Bluestem Ecological Services
- Bull Valley Riding Club
- Chris Schellhaass
- David Haimbaugh
- David Hall
- Emily and Gerald Berendt
- Full Circle Foundation
- Henry and Lynn Zbierski
- Hugh and Marlene Frisbie
- Ingrid Schulze
- Jack and Judy Speer
- Jack and Maurine Kaskel
- James and Elizabeth Bramsen
- Karen Lavin and Wayne Heinmiller
- Kurt and Denice Taylor
- Larry Fetzer
- Laura Fox Charitable Foundation
- Lisa Haderlein and Tom Cubr
- Lynn Malenfant
- Mackie Consultants
- Mani and Elaine Ramesh
- Margaret Bailey
- Mark and Karen Newton
- Mary Maurer
- Meaghan Zeiner, Headwaters Pottery
- Melissa Cooney
- Melodie Feeley
- Michele Mellor and Mike Jenkins
- Orrin and Patricia Bangert
- Pam Schroeder and Deborah (Debby) Church
- Paul and Christine Rechten
- Peter Swenson and Lauri Swenson
- Philip Zack
- Pominidas 1 LLC
- Randy and Nancy Schietzelt
- Renaissance Charitable Foundation
- Robert and Molly Walsh
- Ronald J. Fox Charitable Foundation
- Ross and Jean Knutson
- John and Marilyn Krenger, Sanctuary Farms
- Sandra and Daniel Scheinfeld
- Shawn Kingzette
- Stacie McManus
- Steve and June Keibler
- Steve and Caron Wenzel
- Stu and Tammi Sava
- Ted and Judy Thornton
- The Davey Tree Expert Company
- Thomas and Ellen Walvoord
- Tom and Andrea Krauss
- Wildflower Preservation Society—Illinois Chapter
- Zachary Dolezal, Duke's Alehouse and Kitchen

GRANTS 2023

- \$2,981.00 Illinois Clean Energy Community Foundation
Pollinator Garden at Memorial Oak Groves
- \$5,000.00 Full Circle Foundation — *General operations*
- \$5,000.00 Nicor Gas Company — *Pollinator Garden at Thompson Road*
- \$19,000.00 The Community Foundation for McHenry County — *General operations*
- \$30,000.00 Gerry and Bill Cowlin Foundation
Land acquisition, easement acquisition, and/or habitat restoration
- \$30,000.00 Willow Springs Charitable Trust — *General operations*
- \$40,000.00 Gaylord and Dorothy Donnelley Foundation — *General operations*
- \$60,000.00+ Illinois Department of Natural Resources - NAS
Stewardship at Nature Preserves
- \$70,000.00+ The Community Foundation for McHenry County — *Raices Latinas*
- \$192,000.00 Illinois Department of Natural Resources - RTP
Thompson Road Trails Development

2023 Donors

LEGEND

- Apple Creek Community Food Forest Stewardship
- Easement Endowment Fund
- Beaver Dams Stewardship
- Irish Oaks Stewardship
- Boloria Meadows Nature Preserve
- Long Term Management Fund
- CLIP
- Thompson Road Preserve
- Crowley Oak Woods Stewardship
- WPPC

UP TO \$50.00

- Alice Hayes
- Alice Noble
- Melanie Kill
- Andy Delorenzo
- Ann Somers
- Jeff LeGro
- Annette Rafferty
- Barbara Galler and James Worcester
- Ben Heggen
- Bruce Peters
- Carl and Tracy Bordis
- Carla Schrock
- Catherine Cox
- Chirag Mehta and Juliet Summers
- Craig McMahon
- Damon Demas
- David Johnson
- David Johnson
- Dawn Gilman
- Debbie Keller-Niven
- Deborah Albee
- Debra Ramai
- Derek Kessler
- Diana Carpenter
- Diana Kruse
- Edward Lehman
- Emily Jones
- Erika Dycus
- Erin Murphy
- Frank and Jackie Penze
- Gale Quamme
- Gary and Judi Johnson
- Gay Remich
- Gerard Bauer
- Guinevere Hice
- Heidi Carpenter
- Heidi Mayer
- Ina Roquet
- Jan and Judy Hervert
- Jane Dawson
- Jean Vandewalker
- Jeanne Holm
- Jeanne Steele
- Jeff LeGro
- Jeff Pearson
- Joan and Francis Zangara
- Joe Furlin
- John and Caryn Shiel
- John and Lori McConville-
- Marvin's Toy Store
- John Black
- John Dolsen
- John Evans
- John Teetsov
- John Zahina-Ramos
- Joy Snyder
- Judith Kugler
- Julie Zuidema
- Karen and David Sherman
- Karen Lundell
- Keith and Carol Dafcik
- Keith Lang
- Kelly Garay
- Kevin and Helen Tarchenski
- Kim Rozner
- Kristin Glover
- Kurt and Carol Begalka
- Kylene Gott
- Lake in the Hills Rotary
- Laura Garvin
- Laura Zeiger
- Leigh Comerford
- Linda Mowbray
- Linda Pekelsma
- Lori Kotleba
- Lynn Carlson
- Maria Huffman
- Maribeth Roberti
- Mark and Barbara Bundick
- Mark Menarik
- Marlene Olson
- Mary Donner
- Megan Green
- Megan Ross
- Mendy Sears
- Michael and Ann Conroy
- Michael Birch
- Michael Farmer
- Michael Johnson
- Michael Siepl
- Michele Galante
- Michele Wirtz
- Mike Creegan
- Monica Caldicott
- Nancy Irwin
- Pat Connolly
- Pearl Ratunil
- Pete Jackson
- Peter and Juanita Galayda
- Randi and Bob Rewoldt
- Randy and Jody Mead
- Richard Noeller
- Rick Stevens
- Rob Lamz
- Robert Bialo
- Robert Kennedy
- Sara Arnold
- Sarah Yerkes
- Scott Smith
- Shannon Baltrus
- Stacy Fein
- Steve and Donna Veeneman
- Steve Cafcules
- Steve Wodka
- Strat Kennedy
- Susanne Masi and Domenico D'Alessandro
- Suzette Simon
- Theresa Hart
- Theresa Winter
- Thomas and Eva Wedel
- Thomas West Jr.
- Tom Kubica
- Wally Buttrill
- Windsor Aguirre

\$50.00–\$99.00

Abby Callard
 Alan and Cindy Zastrow
 Alan and Diane Lubow
 Alan Robel
 Alana Carrera
 Alene Shaull
 Alice Hill
 Allen and Karen Gablesen
 Allison Zoeller
 Amanda Anderson
 Amelia Pantone
 Andrea Myers
 Andrea Placzkowski
 Angela Boe
 Angela Burris
 Anita Tebo
 Ann and Casey Venzon
 Anna and David Evans
 Anne Marie Whitmore Lenzini
 Annette and Ryan Parrent
 Annette Musil
 Annette Sather
 Anthony and Grace Tucker
 Anthony and Nancy D'Agostino
 Anthony Bialek
 Anton and Kathryn Spaldon
 April Conover
 Barbara Differding
 Barbara Ober
 Benjamin Wiedmaier
 Beth Bernstein
 Brian and Therese Moxley
 Brian McCarthy
 Candee McMahan
 Carl Edstrom and Carolyn Campbell
 Carol A. Howard
 Carol and Ron Elkins
 Carol J Mercado
 Carol Madsen
 Carol Yirek
 Caroline Anderson
 Caryn McAndrews
 Catherine Peterson
 Cathleen Bourdon
 Cathy and Aage Christensen
 Cecilia Carman
 Chelsea Lynn
 Cheryl Kazimier
 Chester Nelson
 Christine Pado
 Cindy and Paul Meyer
 Claire Gregory
 Claire Marie Jonak
 CNA
 Colonel II James N Pritzker Charitable
 Connie Fischer
 Cristy Binz and David Binz
 Crystal Thomas
 Cynthia and Frank Kron
 Cynthia Kanner
 Dale and Ellen Morton
 Dan and Wanda Holtz
 Daniel and Sharon Smeja
 Daniel Roth
 Dave Emery
 David Albright
 David and Margaret Thiessen
 David and Rani Gladys
 David and Suzanne Johnson
 David Brooks
 David Engelbrecht

David Stout
 Dean Farr
 Deborah Lang
 Dennis and Linda Palys
 Dennis Powell
 Diana Barrett
 Diane Reiff
 Dick and Kay Pfundt
 Donald and Felecia Englert
 Donna Hriljac and Michael Gallery
 Donna Schaefer
 Donovan and Jennifer Day
 Douglas and Concetta Primus
 Douglas Close
 Edward and Mariann Chess
 Ellen Waller and Gianni Bottazzi
 Erin Lopez
 Eugene and Eileen
 Faith Bennett
 Gail Weber
 Gary Moore
 Gene Kratochvil
 George and Nedda Zahn
 Gerard and Marie Thomas
 Ginger Gauger Blossom
 Ginny Boss
 Glenda Maki
 Gretchen Madsen
 Hendrik Reynders
 Irene Pasminski
 Irene Raven
 Iver Johnson
 Ivy Sitkoski
 James Alwill
 James and Alie Thompson
 James and Marcia Johnston
 James and Paulette Novalinski
 James Cudney
 Jamie Jarosz
 Janet Byrnes
 Janet Hugg
 Janice Wilcoski
 Janis Beverly
 Jay Adami
 Jean and Mary Rexroat
 Jeff and Sheila Mohler
 Jeff Kalish
 Jennifer Boudart
 Jerome and Lou Anne Majewski
 Jerry Glogowski
 Jerry Gudauskas
 Jessica Beverly
 Jessica Fitzpatrick
 Jessica Rizza
 Jim and Julie Novak
 Jim Wallin
 Joan Jensema
 Joanne Bates
 Jodi Gibson
 John and Nancy Gonsiorek
 John and Phyllis James
 John Dendor
 John Lane
 John Splitt
 Judy Nett
 Juli Crane
 Julia and Thomas Doherty
 Karen & David Morgan
 Karen Witkins
 Karin Kubacki
 Kate Brozenec
 Keith and Nancy Shevel
 Ken Grubb

Kenley and Kathleen Spooner
 Kenneth and Patti West
 Kevin Cichon and Laurie Collins-Cichon
 Kim Yazell
 Kirsten James
 Kristin Thakkar
 L Evans
 Larry and Marsha Eils
 Laura Gallagher and Brett Paufler
 Laura Slavicek
 Laurie and Rob Cisneros
 LeAnn and Fletcher Belt
 Lee Ann Ali
 Leo Schlosberg and Maralee Gordon
 Leslie Kvistad
 Linda A. Morton
 Linda Byrne
 Linda Gurgone
 Linda Standley
 Lloyd and Sharlene Stellmach
 Lloyd Lesmeister
 Logan and Sophia Gilbertsen
 Lonni Oldham
 Lynn Serra
 Margaret Cook
 Margaret Lavin
 Margaret White
 Margaret Zuleger
 Marilyn Miller
 Marion May
 Mark Alison
 Mark Nichols
 Mark Schwanke
 Marla Klemme
 Mary Ellen Shine
 Mary Ernest
 Mary Gaston
 Mary Kay Dobbeck
 Mary Martin-Bellavia
 Maureen Lavallee
 Maureen Motroni & Bob O'Leary
 Melissa Kinast
 Michael and Kathy Sullivan
 Michael and Kim Casey
 Michael and Teresa Baber
 Michael Bissett and Paula Yensen
 Michael Kraus
 Michael Sedola and Katherine Slover
 Michelle Tarpey
 Mike and Cheryl Lynch
 Mike and Velma Downes
 Milan and Marie Nikitovich
 Mitchell Keck
 Nancy Adami
 Nancy Creed
 Nancy Embach
 Nancy Wilson
 Pamela Rumancik
 Paolo and Mary Mariutto
 Parmod and Kamayani Narang
 Pat Daly
 Paul Gelasi
 Paul Surzyn
 Peggy Nelson
 Phillip Markison
 Phyllis Close
 Rachel and Brice Alt
 Rachel Knutson
 Rance and Alice Lumsden
 Ray and Bobbye Skolorzynski
 Ray Lindberg
 Raymond and Angela Thuma
 Rebecca Brown



Rebecca Heisler
 Rich and Wendy Tobiasz
 Richard & Annette Schoenberger
 Richard and Karen Hattan
 Ridgefield Crystal Lake Presbyterian Church
 Rita Janus
 Robert Dixon-Kolar
 Robert & Christine Frenz
 Robert McCormack
 Robin and Mark Seigle
 Robin Rosenau
 Roger and Linda Stelle
 Ron and Carolyn Jones
 Russell and Linda Becker
 Sandi Teuber
 Sandy Eden
 Sara Denham
 Sarah and Scott Michehl
 Sarah Eisenberg
 Sarah Thompson
 Scott and Anne Basten
 Scott and Debra Viger
 Scott Davis
 Scott Kopacek
 Scott Summers and Carol Krohm
 Shannon Stanis
 Shari Chakoian
 Sheelagh Cooke
 Sherryl and Stephen Ehren
 Sheryl Smith
 Stephen and Kim Platt
 Stephen Kenney
 Steve Robinson
 Steven Thomas
 Sue Bitler
 Sue Rodig
 Susan Gerstenberger
 Susanne Petersson
 Suzanne Hoban
 Ted and Deborah Groat
 Terri Tomicki
 The Benevity Community Impact Fund
 Theresa Lake
 Thomas and Mary Ann Stall
 Thomas Brotz
 Thomas Powell Sr.
 Thomas Riley
 Tricia Rachford
 Vern and Cindy Heinen
 Vicki Rundquist
 Vilia Jakaitis
 Virginia Brightwell
 Wade Merritt
 Wendy Turner
 William and Caroline Sobolak
 William and Christine Batalden
 William McNerney
 Yvette and Randy James
 Yvonne Daniels


\$100.00–\$249.00

Abbvie
 Alexander and Michelle Ross
 Algonquin Garden Club
 Andrea Klein
 Andrew and Dawn McKay
 Ann Legg
 Anne Majewski
 Annie Arrigo
 Anonymous

—continued—


\$100.00–\$249.00

Arthur and Dee Budelier
Barb Bennett
Barbara Day
Barbara Dolmon
Becky Cortina
Bernd Alden
Beverly Dow
Bill and Terrie Warzecha
Bob and Jane Townsend
Bob and Jody Antrim
Bob Romadka
Boon and Cynthia Charoenying
Brian Stewart
Brian Stille
Buzz & Sari Thornton
Calvin and Brooke Steinhoff
Caren and David Gardner
Carl and Pat Kennedy
Carol Ann Kelly
Carol Fetzner
Carole Nett
Catherine Bachand
Cathy Berlinger-Gustafson
Cheri and Pete Magrini
Christine Kustra
Cindy Dittmer
Claire Hodge
Clarence Arnold
Corinne Hardt
Corinne Sobieski
Craig Mueller and Ernest Vasseur
Cynthia and Reginald Layoff
Cynthia Hicks
David and Betty Cleveland
David Chwalisz
David E. Miller
Dean and Katherine Eitel
Denice Beck
Denice Roberge
Diane Charleston
Diane Wlezien
Donald and Emele Peters
Donald and Valerie Matthiesen
Doug Frey
Doug Hawthorne and Margaret
Fox-Hawthorne
Drew Knobloch
Eberhard Veit and
Catherine Leonard Veit
Ed and Carol Ellinghausen
 Edward Jones / Cyber Grants
Eleanor Murphy
Eric and Maureen Larson
Eric Kingery
Fraida and Robert Aland
Gary and Linda Olson
Gary and Mary Ann Kwall
 Gene Virzi
Glenda Owens
Greg Burnett
Heather Gustat
Jack and Terri O'Malley
Jacklyn Crosby
Jacqueline and Ronald Eberle
James and Bonnie Leahy
James and Gay Mather
James and Judith Mroczenski
James Anderson
James Bolm
Janet Vogel-Barrett
Jayne Bockman

Jeanne Adams
Jeanne Schierhorn
Jennifer and John Pihl
Jim Haisler
JoAnn Schindler
Joel and Laura Oppenheimer
John and Joan Knoll
John and Nancy Balough
John and Roberta Marco
John Drummond and Rommy Lopat
John Godlewski
John Golitz and Kay Oman Golitz
John Jenkins and Nan Cibula-Jenkins
John Kremer
Jonathan Didier
Joseph Sternberg and
Betsy O'Leary Sternberg
Joyce Pannhausen
Judith Watts-Lemke
June Stanley
Karen Meyer
Kate Kotecki
Kathy Perkwitz
Kay France
Kerry Leigh and Jim Anderson
Kevin and Leslie Likens
Kevin Lockhart
Kim Freundl
Kim McCallister Kruse
Kristin Purtill
Kyja Omdahl
Lance Jeschke
Larry and Jackie Fichter
Larry Nova
Laura Evers
 Laurel Palma
Linda Balek
Lisa McNerney
Loriann Dowell
Lorna Bauer Wolff
Lorna Gladstone
Lou Emmons
Lynn Zbierski
Marcia Equity Management, LLC
Margaret Behles
Margie Bjorkman
Marilyn Hahn
Marti Swanson
Martie Gorman
Mary and Michael Kalland
Mary Jo Rizzo
Mary Nader
Master Property Owners Association
Michael and Joan Schultz
Michael and Kathleen Hartke
Michael and Leslie Marasco
Michael DiGrazia
Michael Kraus
Nancy Glissman
Nancy Tichenor
Nancy Wright
Naomi Fettes
Neil Whitman and Jane Richards
Neill and Margaret Sachs
Nicholas and Katherine Parkhurst
Nicky Lewandowski
Nora Fox Handler
Ole Sindberg
Oliver Sternberg
Olivia Forgette
Pamela Miller
Pat Lawlor
Paul and Sharon DeHaan

Paul Ring
Peter and Becky Medins
Peter and Beth Nelson
Peter Dinneen
Phil and Melody Stanko
Philip and Helene Lambruschi
Philip Speroff
Preston and Denise Rea
Richard and Cheryl Paull
Richard Haning
Robert and Deborah Sims
Robert and Joan Robson
Robert and Sherrie Ludwig
Robert Bower
Robert and Maureen Horrell
Robert Levin and Debs Wallner
Robert Riepl and Judy Broz Riepl
Robert Schroyer and
Pat Sullivan Schroyer
Roger and Wanda Naylor
Roger Dahlstrom
Ronald and Rosemarie Carpenter
Ronald and Susan Panzer
Rosemary Lemke
Rosemary Morris
Russ Bartmess
Ruth Scifo
Ryan Nuhn
Sandie Tepsick
Sarah and Dave Aldridge
Scott and Janet Burke
Sheelagh Cooke
Shelley Gray
Stephanie Freund
Stephen and Jacqueline Smith
Steve Tayler
Sue Richards
Susan Emery
Susan Smith
Suzanne Morrissey
Sylvia and Thomas Weber
Terry and Roxanne Trumble
Terry Couchman
Terry Willcockson
Thomas and Sharon Miller
Thomas Jensen
Tom and Sue Jensen
Trish McGeady
Trish Woselowsky
Victor and Beverly Meuch
Virgil Berry
Virginia Peschke
William and Karen Schmiel
William and Sue Stroup
William and Susan Cook
William Thomas
Nancy Loomis

\$250.00–\$499.00

 Alan Stromberg
Allan Hormann
Amy and Fritz Goodnow
Annie Stokesberry
Anthony Doctor
April Williams
Bill Stoll and Colleen Maloney
Brad and Kay Wych
Brian Balduf
Bull Valley Garden Club
Bunker Hill Charities
Carol Ann Hogan
Carol Roeske
Cary Area Public Library

Charles and Eileen Mattas
Chris MacInnes
Countryside Flowershop, Nursery
and Garden Center
Dale and Lynne Nelmes
Danita Witkowski
David and Colleen Zeiger
David and Donna Brandt
David Schwaegler
Denise Patterson
 Dennis Dreher
 Diane and Vytautas Lukas
Don Arvidson
Dustin Graves
Ed Bennett and Mary Moltmann
Edward and Joanne Searing
Frank and Jill Mills
George and Char Heckel
Gerald and Pam Witt
Gunnar Gitlin
Henry Reinke
Janet Trafelet
 Jeffry and Jennifer Hill
 Jenetha Piecz
Jennifer Luniewicz-Martins and
Michael Martins
Jerry and Joyce Wexler
Jim and Marlene Keenan
 Joan Davis
Judith Reilly
Kathleen and Charles Clark
Kristy Smith
Kyle Susan Hanna
Laura Fox
Lori Reinker
Marcia Poedtko
Margo Blair
Maria Peterson
Mark and Natalie Hendricks
Mark Stolar
Mary McCann
McHenry County College
Sustainability Center
Melissa Wilhelm
Mike Evans
Nathan Aaberg
Nicholas Fuller, Natural
Communities LLC
Northern Kane Wild Ones
Pat and Sandy Moser
Patricia Dokman
Patricia Honemann
 Patrick Skvoretz
Peter and Becky Medins
Jill Theis
Petra Schmid
Ray Larson
Roberta Ratliff
Roger and Elizabeth Lehmann
Russell and Deborah Johnson
Sandra and Dan Bury
Sara Jones-Amrein
Scott and Kim Brix, Wildzyme
Bioproducts, Inc.
Shade Family Foundation
Steven & Leslie Phelps
Sylvia Asplund
Teresa Kraficisin and Ray Goder
Thomas and Vicki Sheppard
Wayne Svoboda
Wesley and Sharon Dickson,
Dickson Design Studio, Inc.
William and Katherine Weber

\$500.00–\$999.00

Anonymous
Brandon and Marti Frisbie
Bruce Killips
Carol Giammattei
Chuck and Judi Stuck
Danny and Janette Warner
David Bengston
Deanne Mihevc
Donald and Debra Chapman
Ed and Sheila Stassen
Gregory Lietza
 James and Donna Greco
Jeffrey Stofferahn, JAS Environmental Inc.
Karen Strano
Karen Wehman Kennedy
Kathe and Ders Anderson
Kathy and Bruce Kessler
Kathy Powles
Kathy Reiland, Gypsy Glen K-9 Kastle
Kevin and Ana Blair
Mark Mitchell Insurance Agency, Inc.
Mary Grossman
Norman and Marilyn Wentland
 Rebecca Liebman
Russell and Sara Foszcz
Ryan Pomrenke
Stephanie Shetler-Simon and Jerry Simon
Steven Byers and Nancy Williamson
Sue Early
Susan Powers
The Harvard State Bank
 Tom and Lisa Rhoades
Tom Ziomek and Sandra Mattison
Tyler Verba

IN KIND

Alisha Mowbray
Barbara Schneider
Benihana
Chicago Red Stars
Chicago White Sox
Classic Cinemas
Copy Express
Countryside Nursery and Garden Center
Dean Farr
Denise Patterson
Donald and Debra Chapman
Doug Frey
Douglas J Aveda Corporate Office
Ethereal Confections
Field Museum Chicago
Gail Moreland
Georgio's Pizza
Gerald and Pam Witt
Illinois Shakespeare Festival
Indiana Beach Park & Entertainment
Janet Balboa
Jennifer Luniewicz-Martins and
Michael Martins
John and Lori McConville-
Marvin's Toy Store
Kane County Cougars
Karen Stahlecker

Kelly Burgo
Ken Pieper
Lake Geneva Ziplines & Adventures
Laura Ortoleva
Margee Pieper
Mary Jean Deja
Michael and Teresa Baber
Music Box Theater
Navy Pier
Nicholas Fuller Natural Communities LLC

IN HONOR

In Honor of Buddy
Mark Stolar

In Honor of Carol Halma
Tom and Lisa Rhoades

In Honor of Dan Scheinfeld
Robin and Mark Seigle

In Honor of David and Robin Hall
Jim Wallin

In Honor of God, the creator
Victor and Beverly Meuch

In Honor of Logan and Sophia Gilbertsen
Olivia Forgette

In Honor of Mike Grossman
Mary Grossman

In Honor of Sarah and Scott Michehl
Laura Fox Charitable Foundation

In Honor of Ted and Judy Thornton
Carol Giammattei
Kevin and Leslie Likens

In Honor of The Bull Valley Riding Club
Jenetha Piecz

In Honor of Joseph Sternberg and Elizabeth O'Leary-Sternberg
Oliver Sternberg

IN MEMORIAM

In Memory of Al Nett
Carole Nett

In Memory of Christine Zack
Philip Zack

In Memory of Dorothy Arvidson
Don Arvidson

In Memory of Jan Kennedy
Deanne Mihevc

In Memory of John Barchard
Ted and Judy Thornton

In Memory of Judy Thornton
Kim Yazell
Ted and Judy Thornton

In Memory of Nena Thornton
Ted and Judy Thornton

In Memory of Laura Farmer
Michael Farmer

In Memory of Lou Emmons
Kate Koteck
Heidi Mayer
Paul Surzyn

In Memory of Phil Agoranos
Ted and Judy Thornton

In Memory of Richard Gilbertsen
Logan and Sophia Gilbertsen

In Memory of Robert Papini
Renaissance Charitable Foundation

In Memory of Robert Steffens
Joan Davis

In Memory of Rosemary Steffens
Joan Davis

In Memory of Lynn Alice Steffens
Joan Davis

MEMORIAL OAKS

In Memory of Steve Booker
Anonymous, single oak

In Memory of Tim Firak
Anonymous, single oak

In Memory of Aileen Huizinga
Caroline Anderson, single oak

In Memory of - Unspecified
David and Colleen Zeiger, four oaks

In Memory of George and Vera Hendricks
Linda Standley, single oak

In Memory of Corinne Ann Krebs
Lisa McNerney, single oak

In Memory of John Sullivan
Lisa Haderlein and Tom Cubr, single oak
Lorna Bauer Wolff, single oak
Ruth Scifo, single oak

In Memory of Dorothy Olivero
Lorna Bauer Wolff, pair of oaks

In Memory of Todd Joseph Becker
Russell and Linda Becker, single oak

In Memory of Jim Christenson
Scott Davis, single oak

In Memory of Bill Runkel
Trish Woselowsky, single oak

Oak Park Festival Theater
Portillo's
Prairie Moon Nursery
Rau Center For The Arts
Schaumburg Boomers
Silvie Meyer
Six Flags Great America
Stade's Farm and Market, LLC,
Vernon Stade
Stanley and Tamara McMillan

Stephanie Cascio
Sue Early
Syrup Restaurant
Tammy Bozer
Taylor Smith
The Mailbox Post Man
Therese Wisner
Trish Woselowsky
William and Katherine Weber
Wisconsin State Fair Park

Learning Circles for Women Farmland Owners

Are you a woman farmland owner looking to diversify your farm business? Or start a new business altogether? Do you own land and lease to a tenant farmer? Or dream of land ownership? Do you have a passion for growing and taking care of the soil? Maybe you have questions about where to start, how to expand your markets, or how to endure the seasons, but do not know who to talk to. You might be interested in *Women Caring for the Land Learning Circles*.

As TLC works to preserve farmland in McHenry County, we know we also must support the farmland owners and farmers. TLC has been holding women-focused workshops, called Learning Circles, gathering women into a circle (literally and figuratively) for the purposes of peer learning and mutual support. Learning Circles are meant to provide a crucial link between these women and the resources and support system they need to achieve their conservation goals on their farm. Each meeting features a specific topic related to the business of farming or information on farmland management. Because the workshops are for women only, attendees feel free to raise questions, discuss challenges, and get information on the wide range of resources available to them.

Registration is open for Women's Learning Circles in July and August.



*Women
Caring for the Land
Learning Circles*

*SAVE
THESE
DATES*

*July 17
August 14
September 18*

Artwork by:
Spring Bird Studios

July Learning Circle: This Circle will focus on topics such as starting a farm business and how to focus on personal and climate resilience. Special guests include: Betsy Zarko—Arrowleaf Prairie Farm; Carina Mae Vowels—Woodstock Yoga Lounge; Christina Foster—Climate Land Leaders.

Date: Wednesday, July 17, 9:00 a.m.-2:00 p.m.

Location: Arrowleaf Prairie Farm, 6710 McCullom Lake Road, Wonder Lake, IL. *Rain location:* Harrison School, 6809 McCullom Lake Rd, Wonder Lake, IL.

Registration: \$5, please register at www.ConserveMC.org by July 15

August Learning Circle: This Learning Circle will focus on topics such as growing cut flowers including incorporating native flowers, flower breeding, transitioning away from tillage and plastic, and hosting workshops. Special guests include: Anna Guziak-Prochnicka—Gold Fern Farm; Sarah Michel—The Land Conservancy of McHenry County; Jeanne Janson—IL FarmLink.

Date: Wednesday August 14, 9:00 a.m.-2:00 p.m.

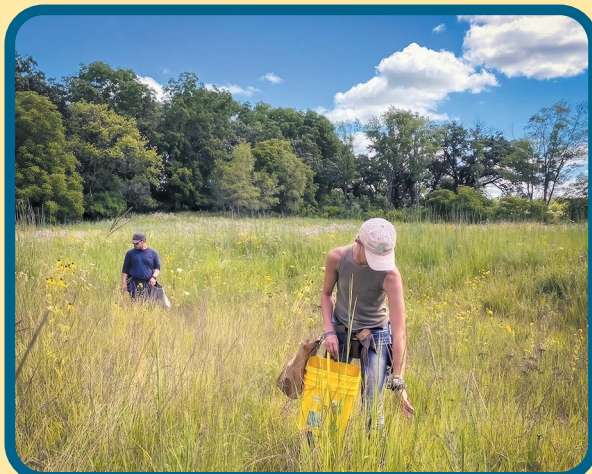
***Location:** Gold Fern Farm, at All Grass Farms: 18N681 State Rte 31, Dundee, IL.

*Meeting location subject to change, followed by farm visit to Gold Fern Farm.

Registration: \$5, please register at www.ConserveMC.org by Aug. 12.

Native Seed Collection for the Home Gardener

Use those seeds! Join Sarah Michehl from The Land Conservancy of McHenry County for tips and tricks on how to collect your native plant seeds. Basic seed identification, collection methods and timelines, and tips on how to direct sow will be covered. Our habitats need all the native plant help they can get, so utilize those seeds!



Date/Time: Wednesday, July 17, 1-2:00 p.m.

Location: Nippersink Public Library, 5418 Hill Rd, Richmond, IL.

Fee: Free, please call 815-678-4014 to register.

Date/Time: Monday, July 22, 6-7:30 p.m.

Location: Harvard Diggins Public Library, 900 E. McKinley St., Harvard, IL.

Fee: Free, please register at www.Harvard-Diggins.org/events

Date/Time: Wednesday, Aug. 14, 10-11:30 a.m.

Location: Crystal Lake Public Library, 126 Paddock St., Crystal Lake, IL.

Fee: Free, please register at www.clpl.org

Date/Time: Aug. 20, 6:00 p.m.

Location: McHenry County College, 8900 Northwest Hwy., Crystal Lake, IL.

Fee: \$15, please register at www.mchenry.edu/personaldevelopment or call (815) 455-8588.



TLC's Fall Sustainability Sale July 18-Aug. 14

Pre-order your native plants, trees, and shrubs for local pickup in September. Help our local environment while also helping TLC. Don't wait to place your pre-order, we expect demand to be high!

Plant pick-up Date: Friday, Sept. 13 and Saturday, Sept. 14

Location: McHenry County Fairgrounds, 11900 Country Club Rd, Woodstock, IL

← *Order your native plants, trees and shrubs for fall planting.*



Birds, Bees and Butterflies: Plant Your Own Pollinator Garden!

Learn how to attract monarchs and other butterflies, birds and bees to your yard. Sarah Michehl from TLC will share easy tips and info on gardening with native plant communities that will provide beauty and everything a pollinator could need.

Date/Time: July 30, 6:00 p.m.

Location: McHenry County College, 8900 Northwest Hwy. Crystal Lake

Fee: \$15, please register at www.mchenry.edu/personaldevelopment or call (815) 455-8588

← *Get advice on how to attract beneficial pollinators to your yard in this class.*



Bask in the Beauty of Summer with a Forest Bathing Walk at Hennen Conservation Area



Jennifer Boudart

Join certified forest bathing guide Jennifer Boudart for a mindful walk to celebrate summer. You'll be guided through a series of invitations to slow down and tune into your senses as you notice what is happening in the woods and around the pond. The pace is easy, and the walk will cover less than half a mile. It will end with a "forest tea" featuring tea made from locally harvested plants.

Date/Time: Saturday, Aug. 17, 9:00-11:00 a.m.

Location: Hennen Conservation Area, 4622 Dean St. Woodstock

Fee: \$30 per person (max 15 people), please register through Jennifer's website, Present Sense Nature and Forest Therapy. Visit www.presentsenseforesttherapy.com and select the event on the "Let's Walk" page, or email jennifer.presentsense@gmail.com

A portion of the proceeds from this walk will be donated to TLC.

← *Celebrate summer with a forest bathing walk at Hennen Conservation Area in Woodstock.*



Apple Creek Food Forest Open House

Interested in seeing what's happening out at the Food Forest? Come out for a tour, visit the gardens, and see the progress we're making! Refreshments will be served.

Date/Time: Thursday, Aug. 22, 4-7:00 p.m. (Rain Date: Aug 29, 4-7:00 p.m.)

Location: Apple Creek Food Forest located at the southwest corner of Hercules Dr. and Dean St. in Woodstock

Fee: Free, no registration required

← *Stop by TLC's Food Forest on Aug. 22 to take a tour and learn more about this unique place in Woodstock.*



FIELD NOTES

Includes 2023 Annual Report Financial Statement and list of donors. **July/August 2024**

Non-Profit Org
U.S. Postage
PAID
Woodstock, IL 60098
Permit No. 179

P.O. Box 352
Woodstock, IL 60098



UPCOMING EVENTS

Event dates and times are subject to change. If you are new to TLC workdays or it's been a while, please be sure to fill out a volunteer form online at conservemc.org/volunteer before you attend so you can receive updates or cancellations.

July 1: Thompson Road Preserve restoration workday
9505 Thompson Rd., Bull Valley
9:00 am–12:00 pm

July 3: Crowley Oaks restoration workday
18725 Crowley Rd., Harvard
9:00 am–12:00 pm

July 6: Irish Oaks Nature Preserve restoration workday
19019 Lincoln Rd., Harvard
9:00 am–12:00 pm

July 10: Crowley Oaks restoration workday
18725 Crowley Rd., Harvard
9:00 am–12:00 pm

July 15: Thompson Road Preserve restoration workday
9505 Thompson Rd., Bull Valley
9:00 am–12:00 pm

July 17: Crowley Oaks restoration workday
18725 Crowley Rd., Harvard
9:00 am–12:00 pm

July 17: Native Seed Collection for the Home Gardener
Nippersink Library, 5418 Hill Rd, Richmond
Call 815-678-4014 to register.
1:00 pm–2:00 pm

July 17: Women's Learning Circle at Arrowleaf Prairie Farm, 6710 McCullom Lake Road, Wonder Lake
\$5 per person, register at ConserveMC.org
9:00 am–2:00 pm

July 20: Yonder Prairie restoration workday
1150 S. Rosefarm Rd., Woodstock
9:00 am–12:00 pm

July 22: Native Seed Collection for the Home Gardener
Harvard Diggins Public Library
900 E. McKinley St. Harvard, Harvard-Diggins.org/events
6:00–7:30 pm

July 24: Crowley Oaks restoration workday
18725 Crowley Rd., Harvard
9:00 am–12:00 pm

July 30: Birds, Bees and Butterflies: Plant Your Own Pollinator Garden, McHenry County College
8900 Northwest Hwy #14, Crystal Lake
\$15 per person, mchenry.edu/personaldevelopment
6:00 pm

July 31: Crowley Oaks restoration workday
18725 Crowley Rd., Harvard
9:00 am–12:00 pm

Aug. 3: Irish Oaks Nature Preserve restoration workday
19019 Lincoln Rd., Harvard
9:00 am–12:00 pm

Aug. 5: Thompson Road Preserve restoration workday
9505 Thompson Rd., Bull Valley
9:00 am–12:00 pm

Aug. 7: Crowley Oaks restoration workday
18725 Crowley Rd., Harvard
9:00 am–12:00 pm

Aug. 14: Crowley Oaks restoration workday
18725 Crowley Rd., Harvard
9:00 am–12:00 pm

Aug. 14: Native Seed Collection for the Home Gardener
Crystal Lake Public Library, www.clpl.org
126 Paddock St, Crystal Lake
10:00 am–11:30 am

Aug. 14: Women's Learning Circle at Gold Fern Farm
18N681 State Rte 31, Dundee
\$5 per person, register at ConserveMC.org
9:00 am–2:00 pm

Aug. 17: Yonder Prairie restoration workday
1150 S. Rosefarm Rd., Woodstock
9:00 am–12:00 pm

Aug. 17: Forest Bathing Walk at Hennen Conservation Area, 4622 Dean St. Woodstock
\$15.00 per person, please register at presentsenseforesttherapy.com
9:00 am–11:00 am

Aug. 19: Thompson Road Preserve restoration workday
9505 Thompson Rd., Bull Valley
9:00 am–12:00 pm

Aug. 20: Native Seed Collection for the Home Gardener
McHenry County College
8900 Northwest Hwy #14, Crystal Lake
\$15 per person, mchenry.edu/personaldevelopment
6:00 pm

Aug. 21: Crowley Oaks restoration workday
18725 Crowley Rd., Harvard
9:00 am–12:00 pm

Aug. 22: Apple Creek Food Forest Open House
Apple Creek Food Forest, Dean Street, Woodstock
4:00–7:00 pm

Aug. 28: Crowley Oaks restoration workday
18725 Crowley Rd., Harvard
9:00 am–12:00 pm

815•337•9502 The Land Conservancy of McHenry County ConserveMC.org



Facebook.com/ConserveMC



@ConserveMC



@ConserveMcHenryCounty



@LandConservancyOfMcHenryCounty

